

Overview

The AdTracker interface was enhanced to handle up to six fields with pull down capability on the main AdTracker spread sheet. This is similar functionality currently available with the AdTracker status field. As an additional upgrade, the status field can now be configured to have sub-statuses.

Functionality

Users will no longer need to open an ad's electronic ad jacket to change certain fields or update a sub-status. This can all be done from the main AdTracker list window with a simple mouse button click.

Also, selected statuses can be configured to trigger an immediate request for a sub-status. For example, if you would like to track why an ad needed corrections, you can configure AdTracker to automatically pop up a dialog box requesting a "correction sub-status" anytime the ad is placed in the corrections status. Users would then be prompted to identify if the correction was a result of a "Customer" request, a "Sales Rep" request, etc.

Any previously configured status can trigger this sub-status functionality giving you the ability for total customization.

How to Upgrade

Visit our website for the latest AdTracker build with this new functionality.

Follow this link to download directly:

http://www.dps-ct.com/home/downloads/products/adtracker/adtracker_osx.zip

To get the zip file password please call 860.721.9700

You will also need to update the following:

- 1) Headings.ini file > located on the server or in the local DPS folder
- 2) Update the Display_Expand database with a new table called "DAT_SUB_STATUS"
Note: this new table is only needed when adding the new sub-status feature

Please review the following pages for detailed instructions.

If you need assistance, please contact DPS Technical Support.

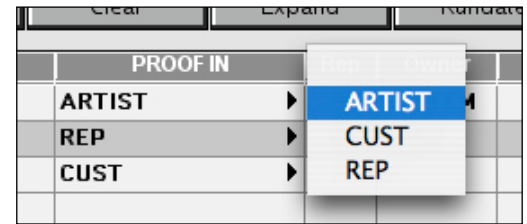
support@dps-ct.com
860.721.9700



Add Pull Down Fields:

1) Modify the **HEADINGS.INI** file

This configuration file can be found either on the server or in the local DPS folder.



The screenshot shows a table with a header row labeled 'PROOF IN'. Below the header, there are three rows: 'ARTIST', 'REP', and 'CUST'. A pull-down menu is open over the 'ARTIST' row, showing three options: 'ARTIST', 'CUST', and 'REP'. The 'ARTIST' option is currently selected and highlighted in blue.

First, check the local DPS folder of the client workstation.

If a **HEADINGS.INI** file does not exist in this folder, you can find the exact path of the file by opening the **GLOBAL.ini** file, also located in the DPS folder.

Open the **HEADINGS.INI** file and locate the columns to add the pull-down menu functionality. Modify the [DA] section only.

```
[DA]
Number of Headings=16
Heading[0]=Ad Number,0,12
Heading[1]= Type,9999,16
Heading[2]=Status,46,15
Heading[3]=Size,32,6
Heading[4]=Ad Type,70,8
Heading[5]=Proofs In,470,15,M
Heading[6]=Customer,96,20
Heading[7]=Text,452,3
Heading[8]=Toning,440,10
Heading[9]=Color,496,5
Heading[10]=Assigned,130,9
Heading[11]=Rep,358,4
Heading[12]=Owner,168,7
Heading[13]=Section,408,12
Heading[14]=Next Run,146,8
Heading[15]=Tag Line,654,30
```

By placing a **“,M”** at the end of the line, this tells the client AdTracker application that this column should be designated as a pull-down menu.

The following six columns can be configured to work with the pull-down functionality:

Team (temp1)	offset=130	max length=15
Deadline (temp4)	offset=784	max length=37
EPS Path (color)	offset=465	max length=4
Est Time (queue)	offset=160	max length=7
Proofs Out (r_copy_uo)	offset=483	max length=12
Proofs In (r_copy_lines)	offset=470	max length=12

The AdTracker app will automatically generate a pull-down menu by executing a special “select distinct” query, which will automatically fill the menu based on current records in that field.

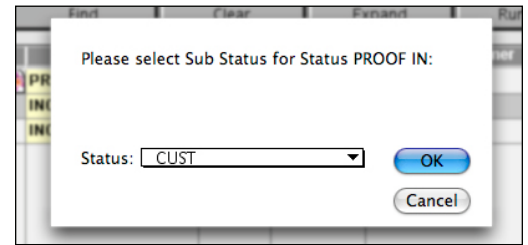
2) Restart your AdTracker client application



Add Sub-Statuses:

1) Insert the new SQL table "DAT_SUB_STATUS"

Obtain the SQL script to insert the new table into your Display_Expand database. This table will be used in conjunction with the new sub-status functionality. To receive the script, please contact DPS.



Open a query window for the Display_Expand database.

Note: make sure the "Display_Expand" database is selected in the query window and not "master"

In the query window, Select File > Open to load the DAT_SUB_STATUS SQL script and then execute the query by hitting F5.

DAT_SUB_STATUS Table Structure:

Field	Description	Example
status	Status value AdTracker will match on	PROOF IN
stat2_field	STAT2 field where sub_status will be stored	r_copy_lines
field_string	Field to list in the dialog box	REP
operation_id	Unique Operation ID for History2 table	200
temp_str1	Undefined	
temp_str2	Undefined	
temp_str3	Undefined	
temp_int1	Undefined	
temp_int2	Undefined	

2) Input the appropriate records into the "DAT_SUB_STATUS" table

Sample SQL insert statements:

Insert DAT_SUB_STATUS values ('PROOF IN','r_copy_lines','REP',200,'','','')

Insert DAT_SUB_STATUS values ('PROOF IN','r_copy_lines','CUST',201,'','','')

Insert DAT_SUB_STATUS values ('PROOF IN','r_copy_lines','ARTIST',203,'','','')

3) Insert a new configuration line into your ETS_PATH.dat file

Sub Status Field Name>>r_copy_lines

This entry defines which STAT2 field will be used to represent sub status. For example

4) Restart your AdTracker client application

